

**#DesignforAntiFragility**

# Practicing, Teaching and Gender Equity

In person and online event  
CRAFT + WEBEX (online)  
The Webex link will be  
provided upon registration

Through presentations and discussions, we will explore the themes of practising, teaching, and promoting gender equity in architecture, drawing on international perspectives and actions. The aim is to examine the conditions shaping the profession's culture, share pedagogical approaches that challenge inequalities, and reflect on how universities and practitioners can work together towards a more inclusive discipline.

14:15 | Registration at Craft DASTU -  
Building 11B - Via Ampère, 20

14:30 | Welcome and Opening Remarks  
Cassandra Cozza | DASTU, Politecnico di Milano

14:45 | Lectures [English]  
Gender Equity in Architectural Education and  
Professional Culture

**The Gender Dimension of University:  
The Approach of Politecnico di Milano**  
Mara Tanelli | Rector's Delegates,  
Diversity and Inclusion, Politecnico di Milano

**Women in Architecture: A UK Perspective**  
Sumita Singha | OBE, Board Trustee for Education and  
Professional Development, RIBA

**Build it Together: Women's Experience in  
Architecture - The Fawcett Report**  
Emily Jeffers | Diversity and Inclusion Specialist, RIBA

**Teaching Feminism and Architecture**  
Elke Krasny | Professor at the Academy of Fine Arts  
Vienna

16:45 | Q&A

17:00 | Coffee Break

17:30 | Lectures [Italian]

Unveiled Histories in Architectural Pedagogies and  
Practice / Storie svelate nelle pedagogie e nella pratica  
progettuale

**Donne in architettura: pedagogie e pratiche a Milano**  
Ilaria Valente | Vice Rector for International Affairs  
and Full Professor of Architectural and Urban Design,  
DASTU, Politecnico di Milano

**Fuori dall'ombra: costruire una genealogia al  
femminile**  
Claudia Mattogno | Fondazione Roma Sapienza

**Fair and Equitable Work**  
Francesca Claudia Scotti | President Ordine Architetti  
PPC della Provincia di Milano

**Pratiche femministe per ripensare gli spazi**  
Claudia Bruno | Journalist and Writer, inGenere,  
Fondazione Brodolini

**Equità di genere tra pedagogia e pratiche del progetto**  
Carolina Pacchi | Director of DASTU and Full Professor  
of Urban and Regional Planning, DASTU, Politecnico di  
Milano

18:45 | Q&A

Chairs

Cassandra Cozza, Arianna Scaioli |  
DASTU, Politecnico di Milano



DIPARTIMENTO  
DI ARCHITETTURA  
E STUDI URBANI

**craft**  
competence center  
anti-fragile territories

Under the Patronage of



ORDINE DEGLI ARCHITETTI,  
PIANIFICATORI, PAESAGGISTI E CONSERVATORI  
DELLA PROVINCIA DI MILANO

Supported by



The event falls within the framework of the DASTU Department's Continuing Education Program. Participation in the event is free of charge, subject to registration via the link by May 14, 2026. Seating is limited to 70 participants.

Link to register:

<https://www.polimi.it/en/education/specializing-masters-and-postgraduate-programmes/master-detail/573>

**Seminar Director:** Cassandra Cozza **Organizer:** Arianna Scaioli

#DesignforAntiFragility

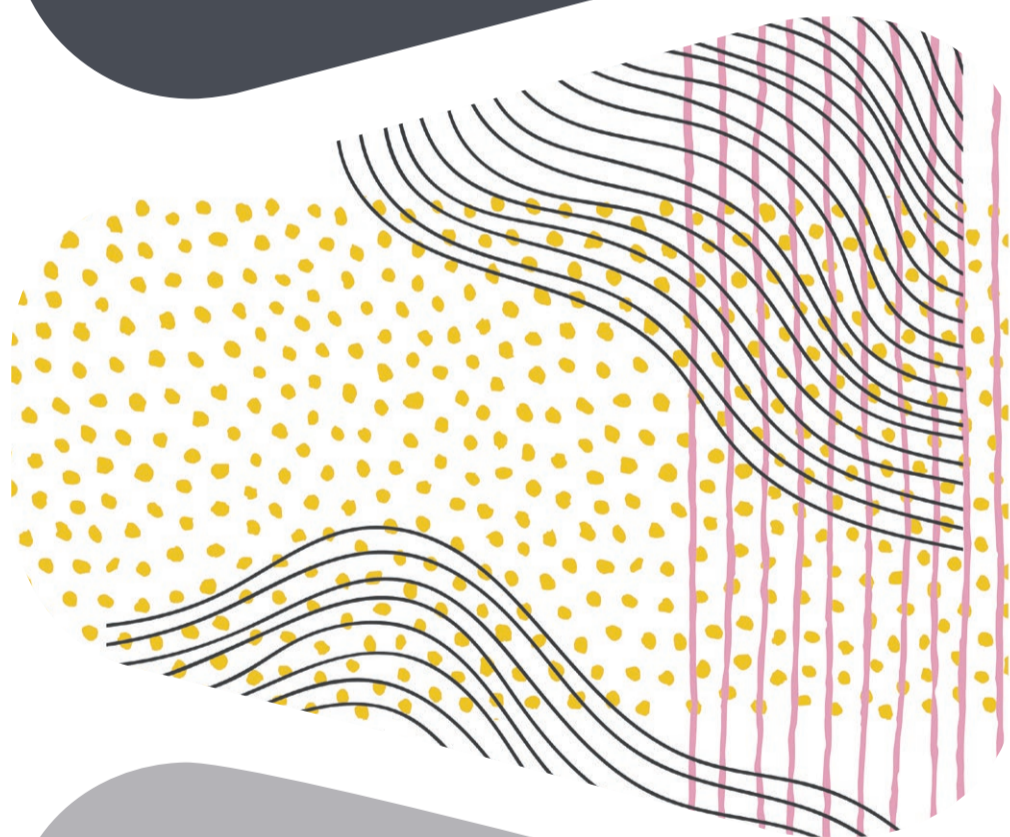
# Feminine and Feminist Architecture

This space is ~~not~~ for you  
place

Scientific Curator: Cassandra Cozza

Work Group:

Arianna Scaioli, Sumita Singha



This CRAFT Open Forum investigates how architectural design and spatial practices can support antifragility, foster forms of care, and question specific forms of exclusion embedded in the built environment. The research aligns with several SDGs – 5 Gender Equality, 10 Reduced Inequalities, and 11 Sustainable Cities and Communities – positioning architecture as an active agent of social transformation.

**MAY 15, 2026**

## INTERNATIONAL SEMINAR

The event addresses the themes of practicing, teaching, and promoting gender equity through training, awareness-raising, and knowledge-sharing.

## PAST EVENTS

### (NEW) TYPES AND TYPOLOGICAL HYBRIDISATIONS

Cycle of symposia with roundtable

March 23

### HOUSING BEYOND THE HOUSE

April 13

### OPEN-TO-ALL URBAN SPACES

May 11

### ARCHITECTURES FOR CARE AND INTERDEPENDENCE

For more detail:

<https://craft.dastu.polimi.it/en/open-forum/103>

Info: [cassandra.cozza@polimi.it](mailto:cassandra.cozza@polimi.it),

[ariannaluisa.scaioli@polimi.it](mailto:ariannaluisa.scaioli@polimi.it)

