

PROGETTISTA: ING. ALBERTO PERDOMI ORDINE DEGLI INGEGNERI DELLA PROVINCIA DI MILANO N. A17290	DIRETTORE DEI LAVORI	COMMITTENTE	IMPRESA ESECUTRICE
--	----------------------	-------------	--------------------

CeAS

CENTRO DI ANALISI STRUTTURALE S.r.l.

Viale Giustiniano, 10
20129 MILANO
TEL. +39 02 2020 221
FAX. +39 02 2951 2533
E-MAIL: ceas@finzi-ceas.it
WEB: www.ceas.it

SISTEMA GESTIONE QUALITA'

AZIENDA CON SISTEMA QUALITA'
UNI EN ISO 9001:2008
CERTIFICATO n° K031
RILASCIATO DA
QUASER CERTIFICAZIONI S.R.L.
Progettazione ed erogazione di servizi di
Ingegneria civile - strutturale, Infrastrutturale,
geotecnica, per l'architettura e per l'urbanistica,
coordinamento di progetto e progettazione
Integrata, calcolo specialistico strutturale e
geotecnico, direzione lavori, collaudo statico
e coordinamento della sicurezza in fase
di progettazione ed esecuzione (EA 34)

COMMITTENTE

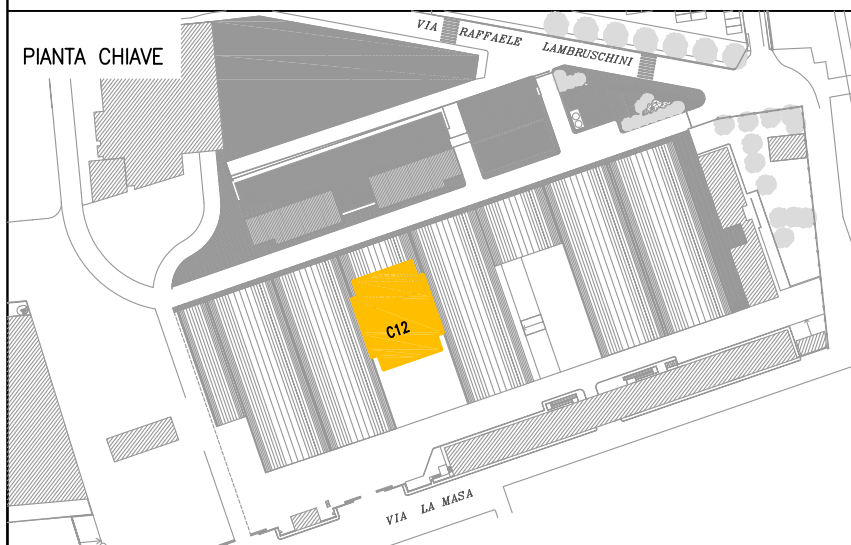


POLITECNICO DI MILANO

Amm. Centrale - Dip. di Energia - Area Tecnico Edilizia
Piazza Leonardo da Vinci 32 -20133 milano

Responsabile Unico del Procedimento: Arch. R. Licari

PIANTA CHIAVE



OPERA DA ESEGUIRE

EDIFICIO LABORATORIO
per installazione di un calorimetro
calibrato a due camere per il
Dipartimento di Energia
Campus La Masa - Lambruschini

TITOLO ELABORATO

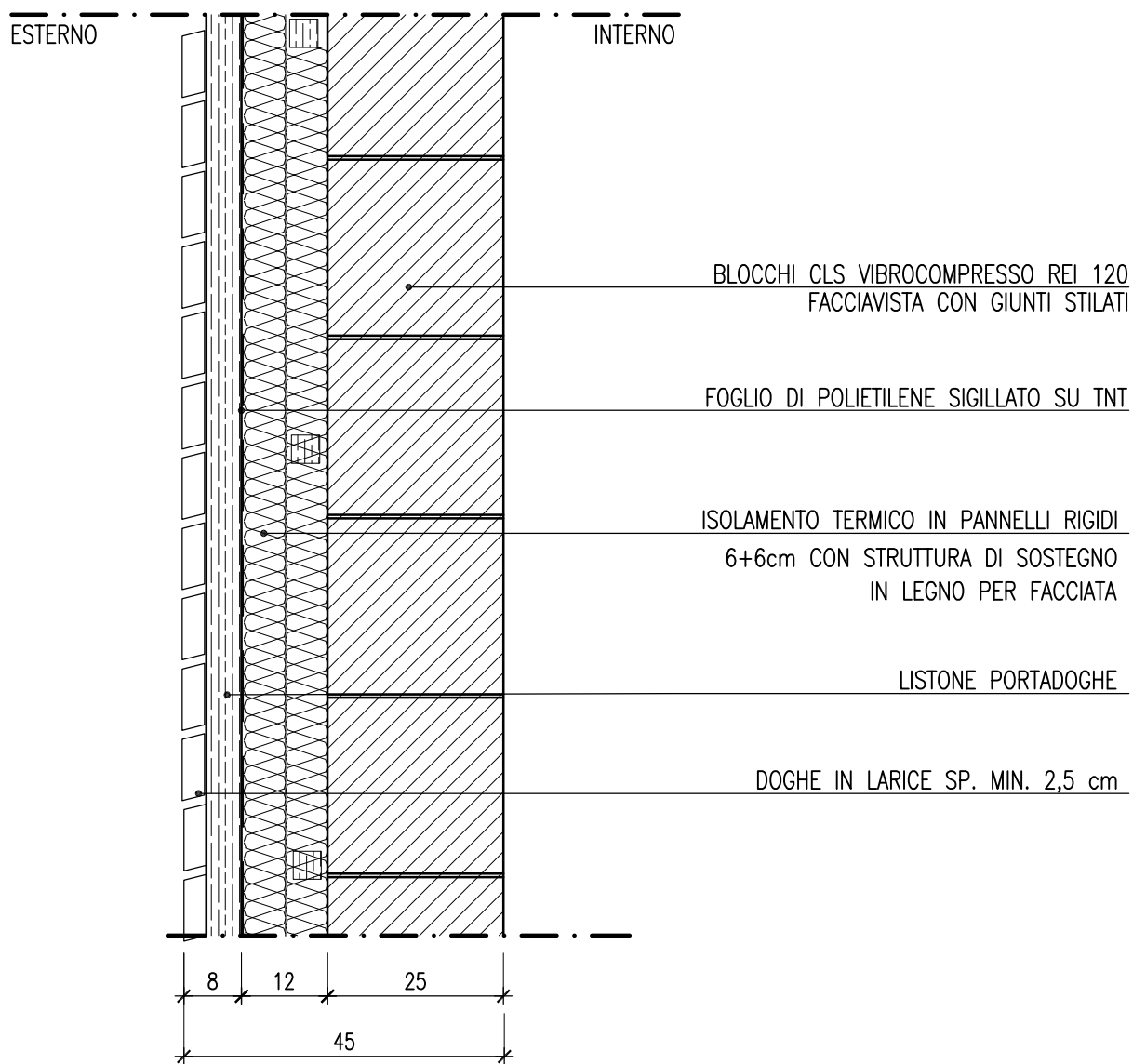
**PROGETTO ESECUTIVO
ABACO MURATURE**

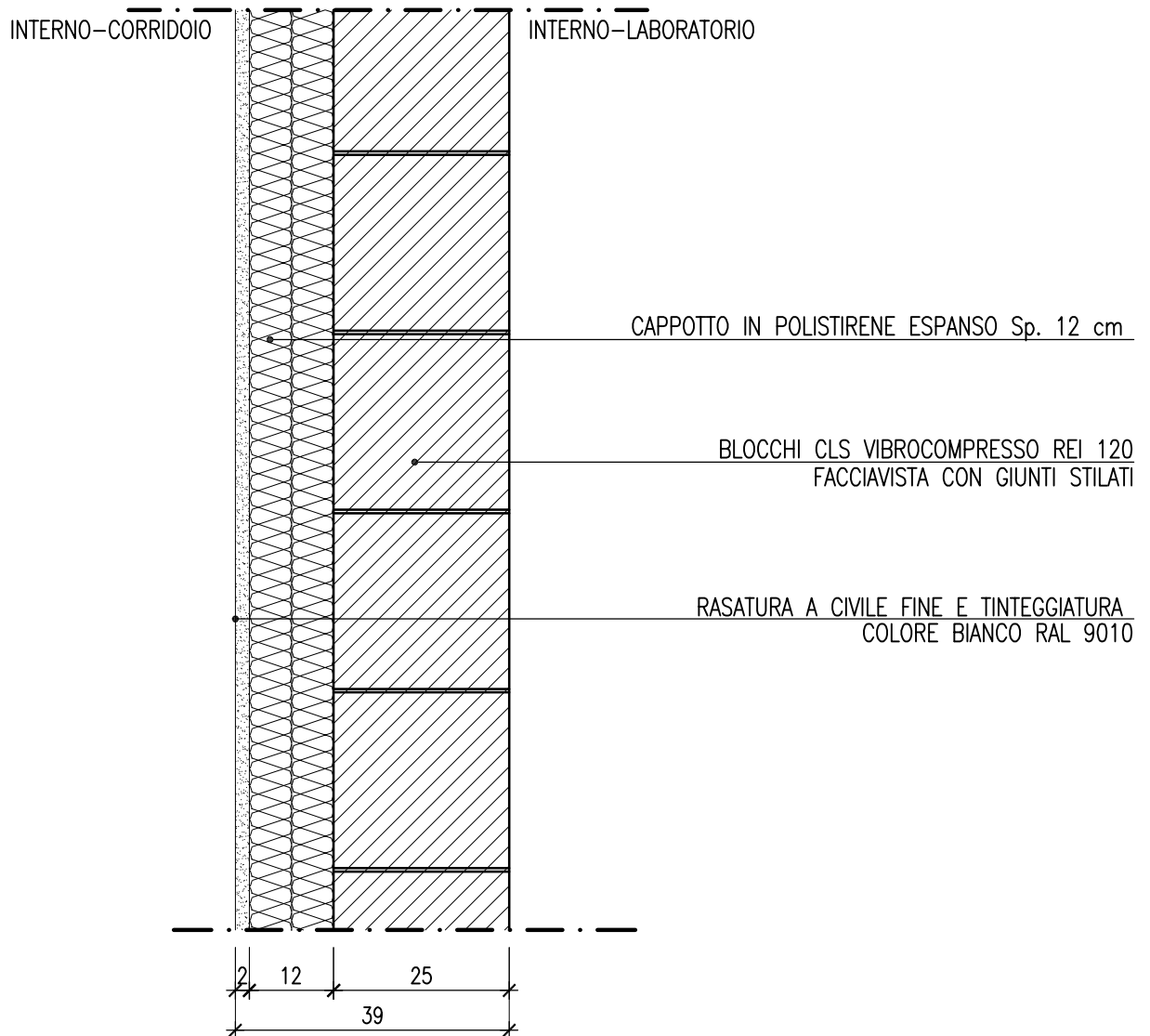
Revisione	Data	Descrizione				Redatto	Verificato		Approvato	R.C.
0	18-12-12	PRIMA EMISSIONE				GIUFFREDI	PERDOMI		N.A.	PERDOMI
Nome File		Formato	Scala	Codice commessa	Tipologia commessa	Tipologia elaborato	Fase progett.	Parte d'impianto	Progressivo elaborato	
PED-EC-021.pdf		A0	1:20	12017	PE	D	E	C	021	

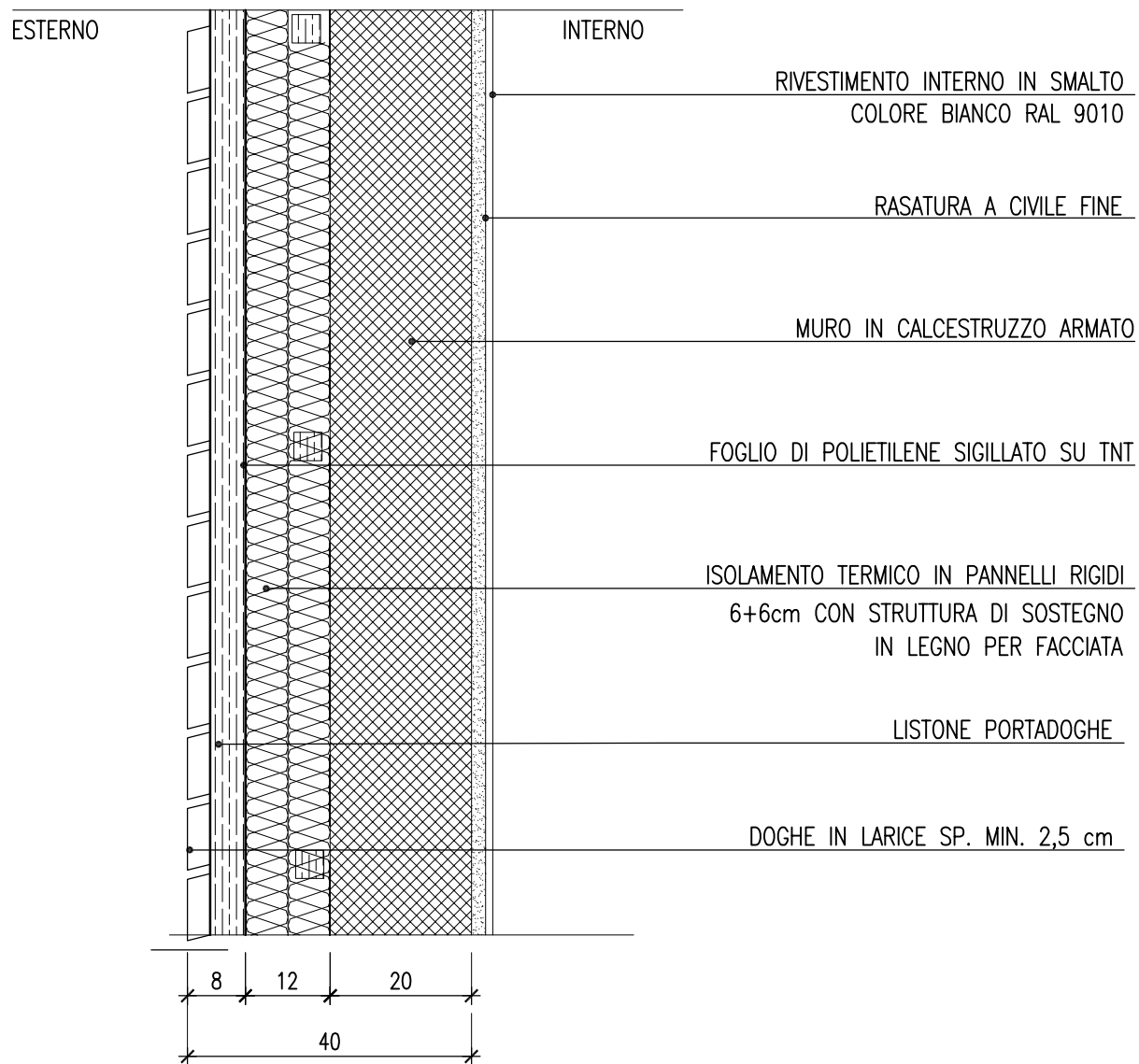
DOCUMENTI DI RIFERIMENTO:

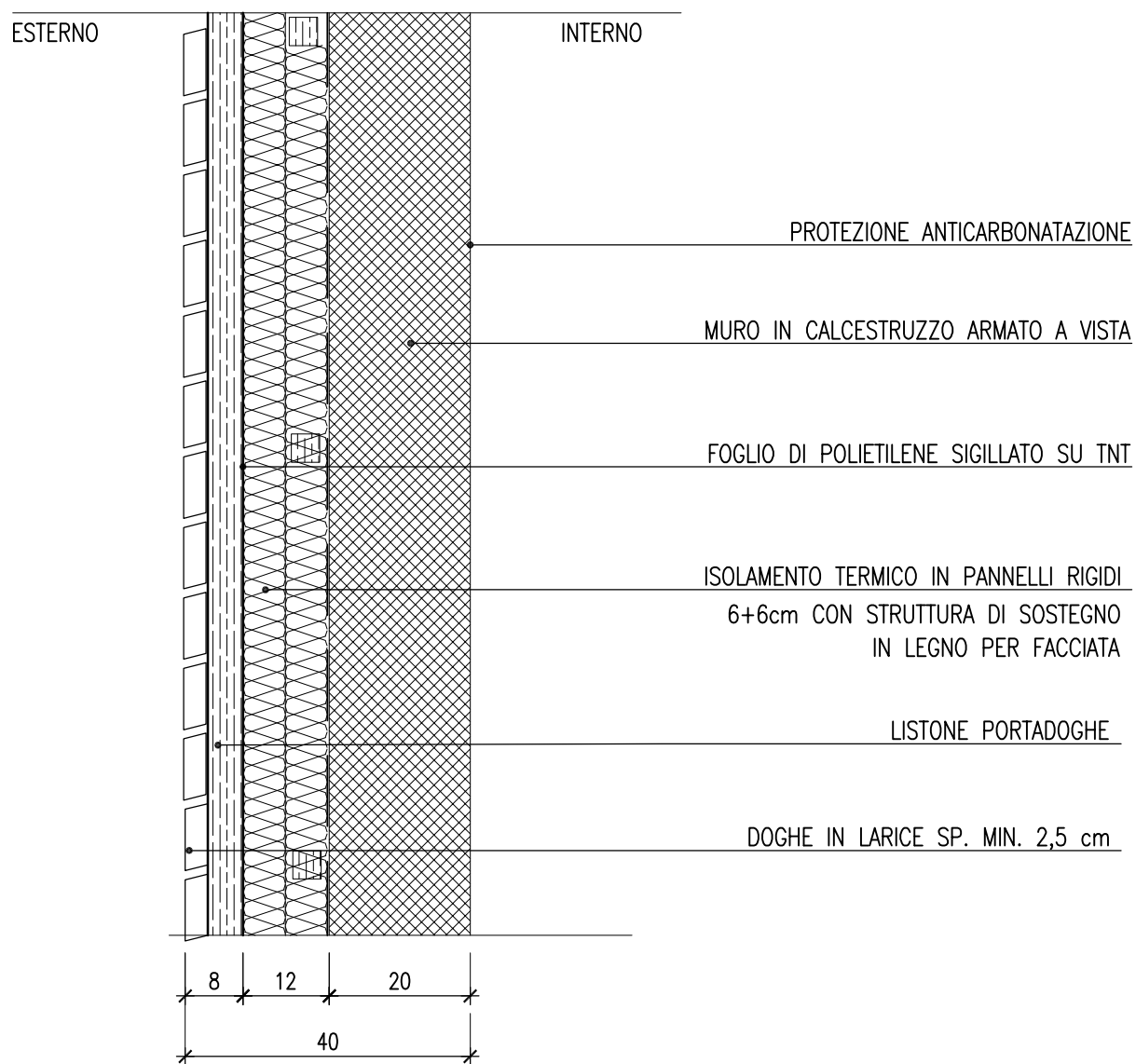
PER-EQ-001 CAPITOLATO SPECIALE D'APPALTO – SPECIFICHE TECNICHE.

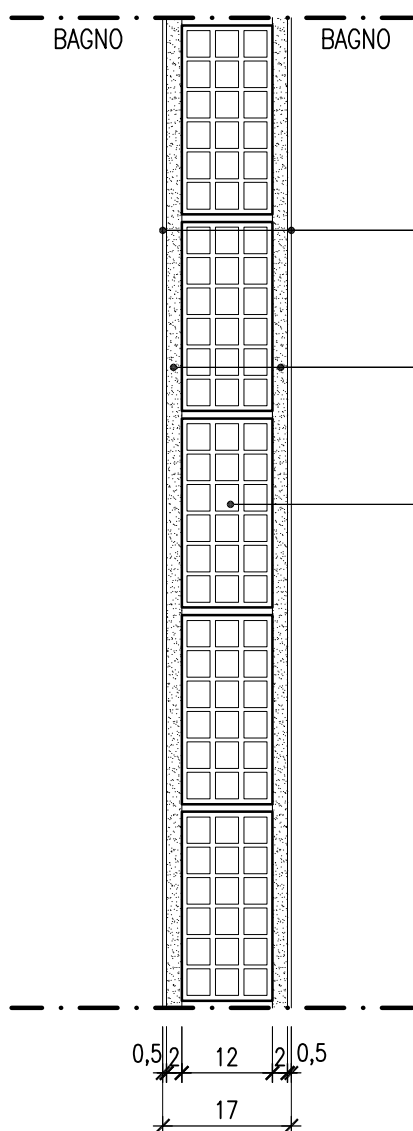
PER-EQ-002 ELENCO PREZZI UNITARI.

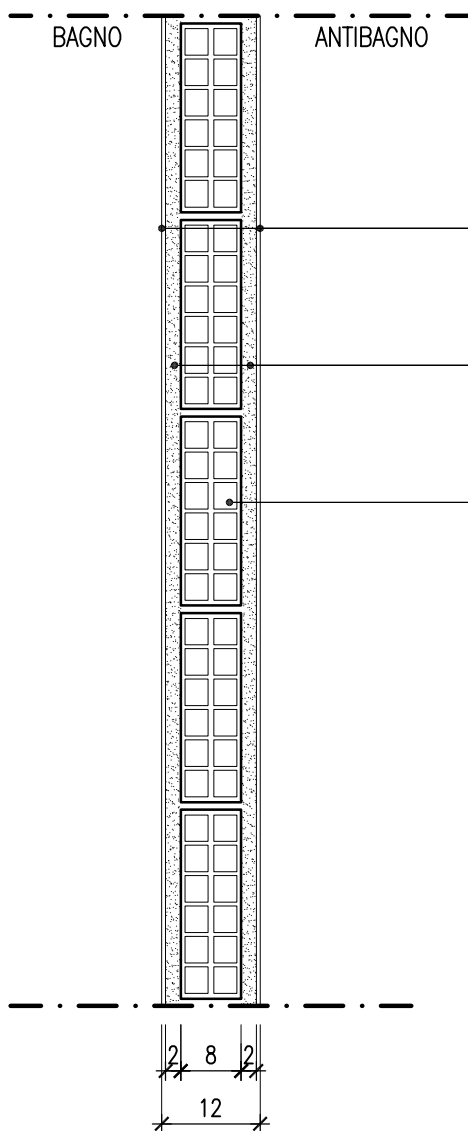








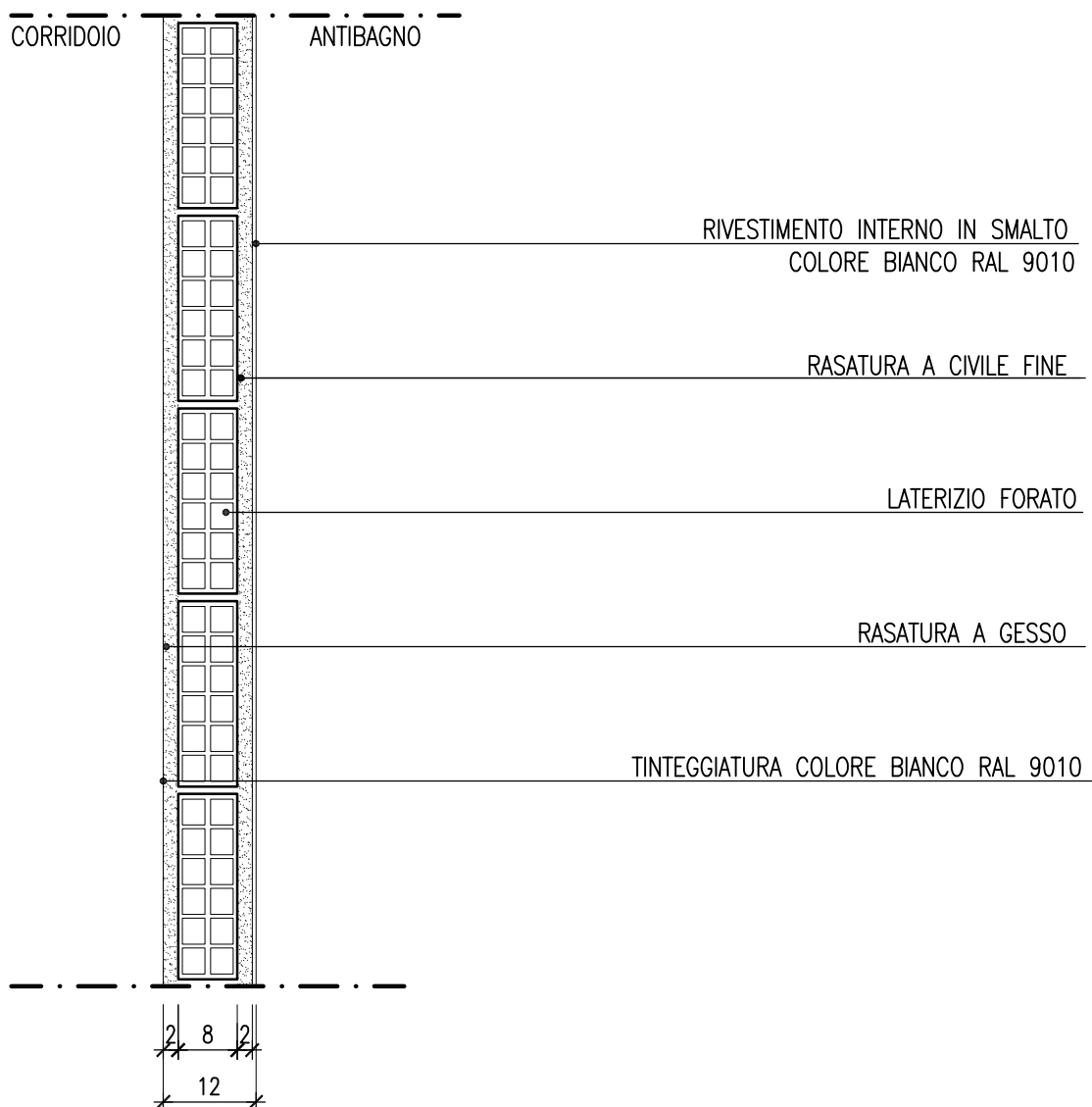




RIVESTIMENTO INTERNO IN SMALTO
COLORE BIANCO RAL 9010

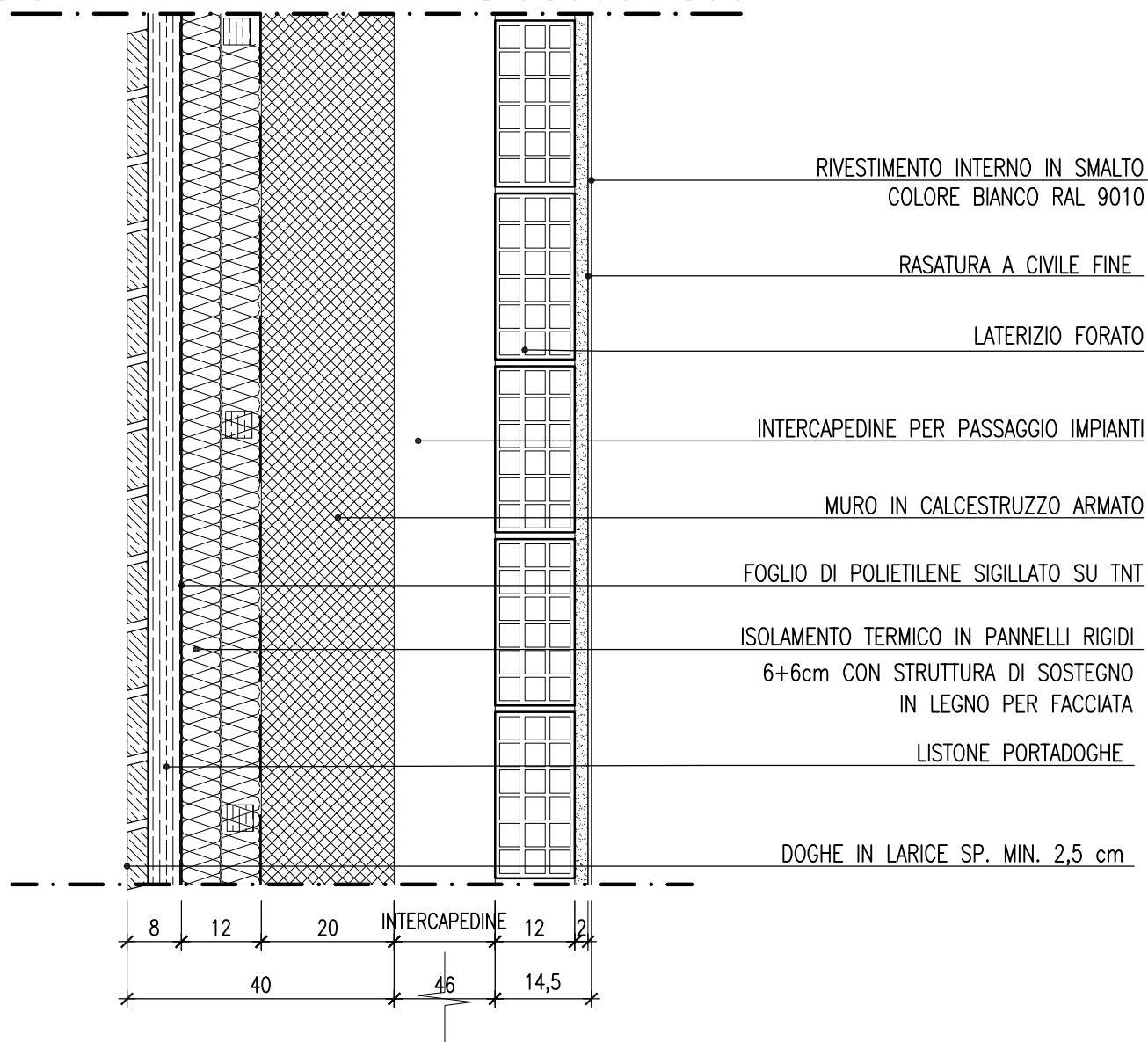
RASATURA A CIVILE FINE

LATERIZIO FORATO



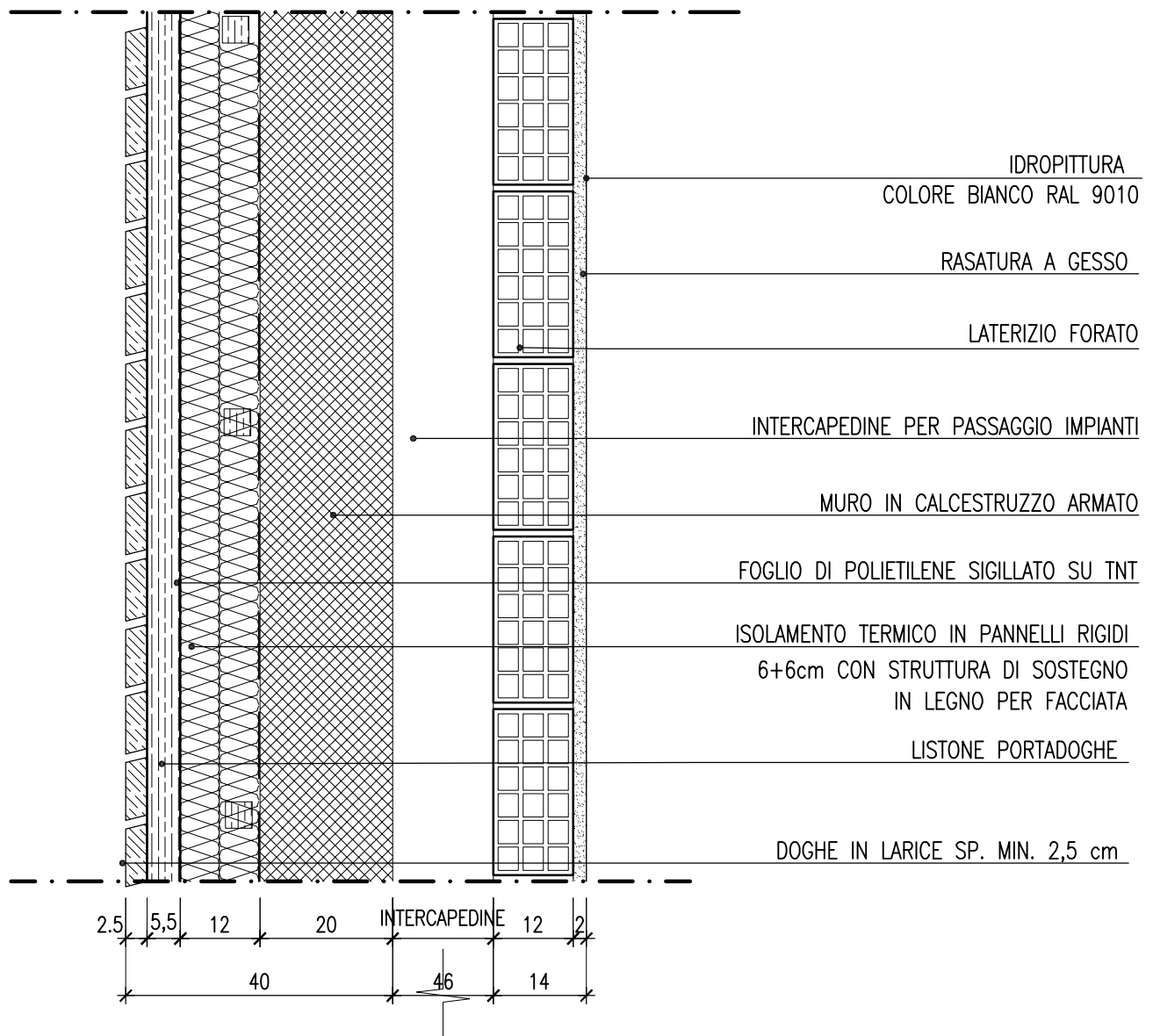
ESTERNO

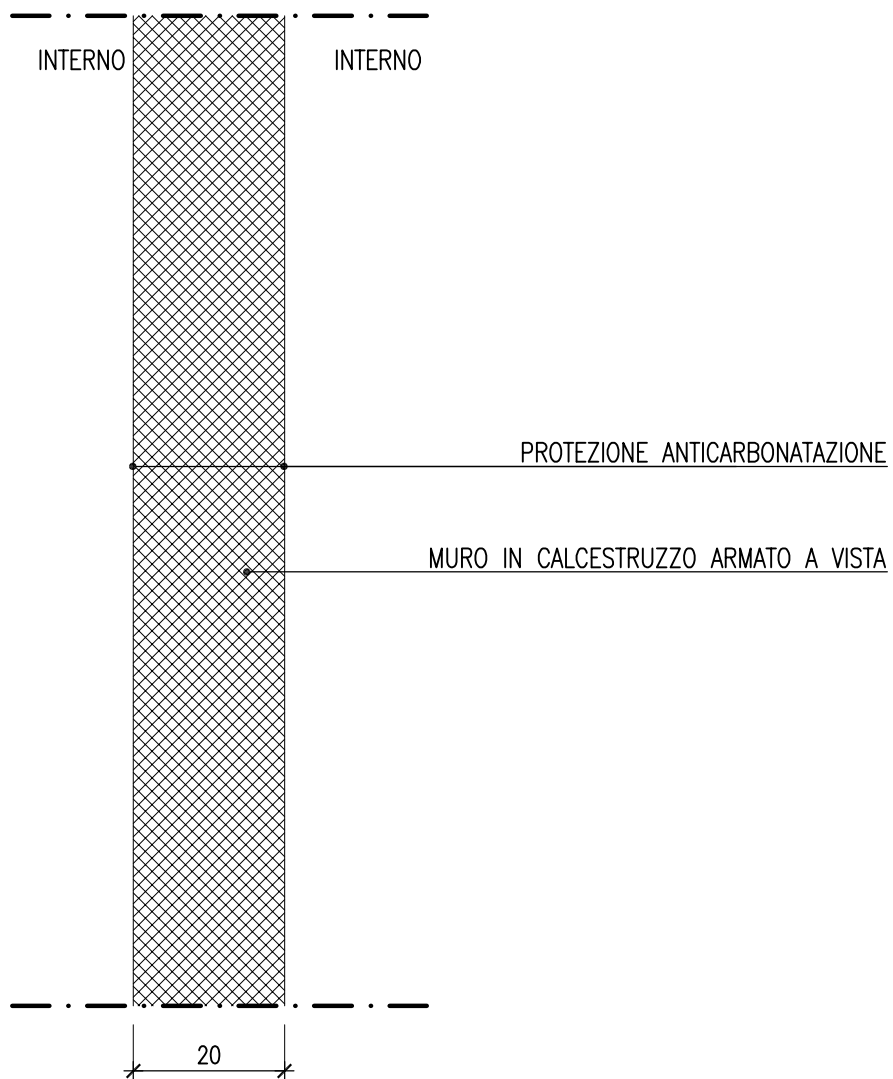
INTERNO-BAGNO O ANTIBAGNO

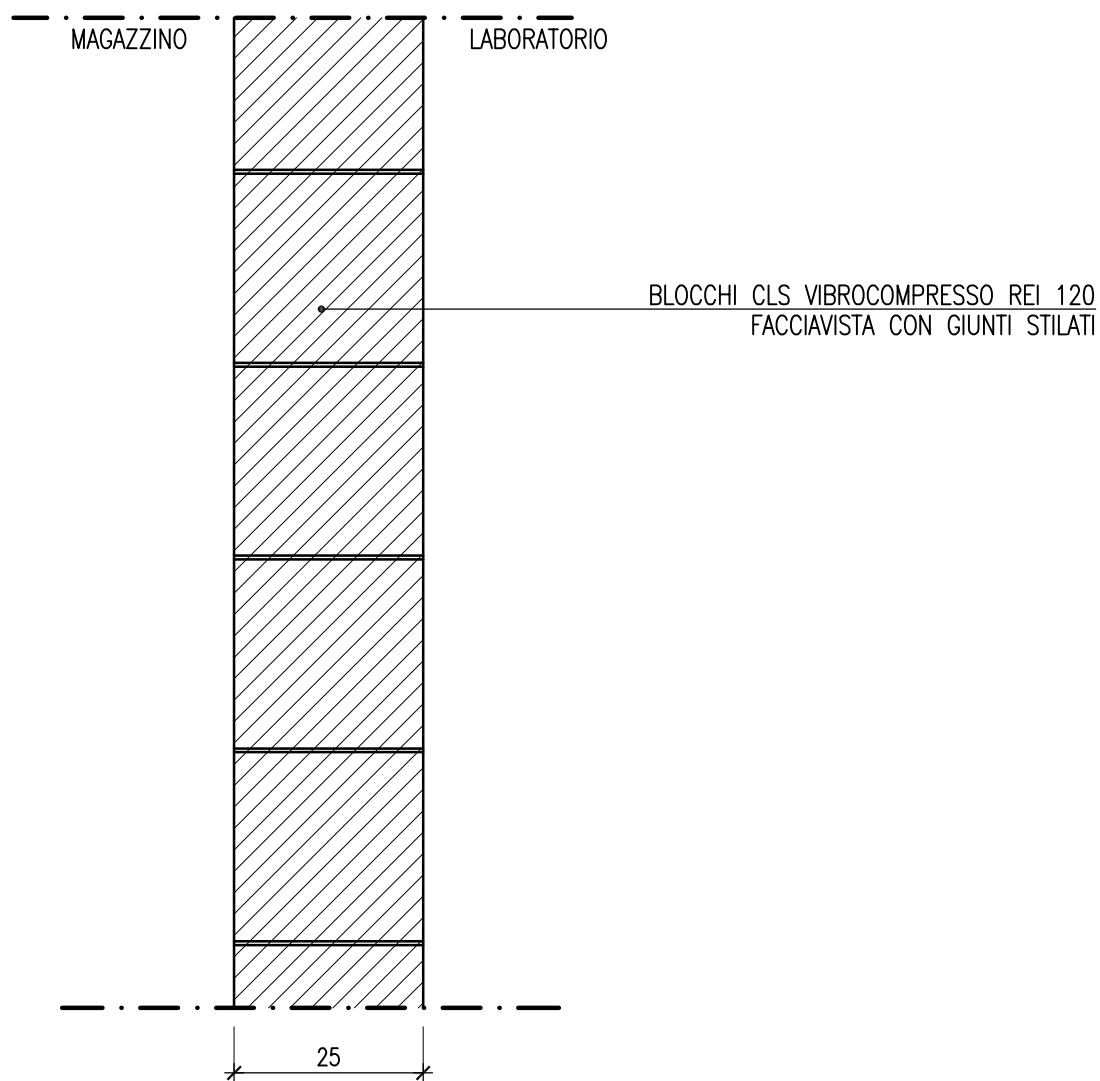


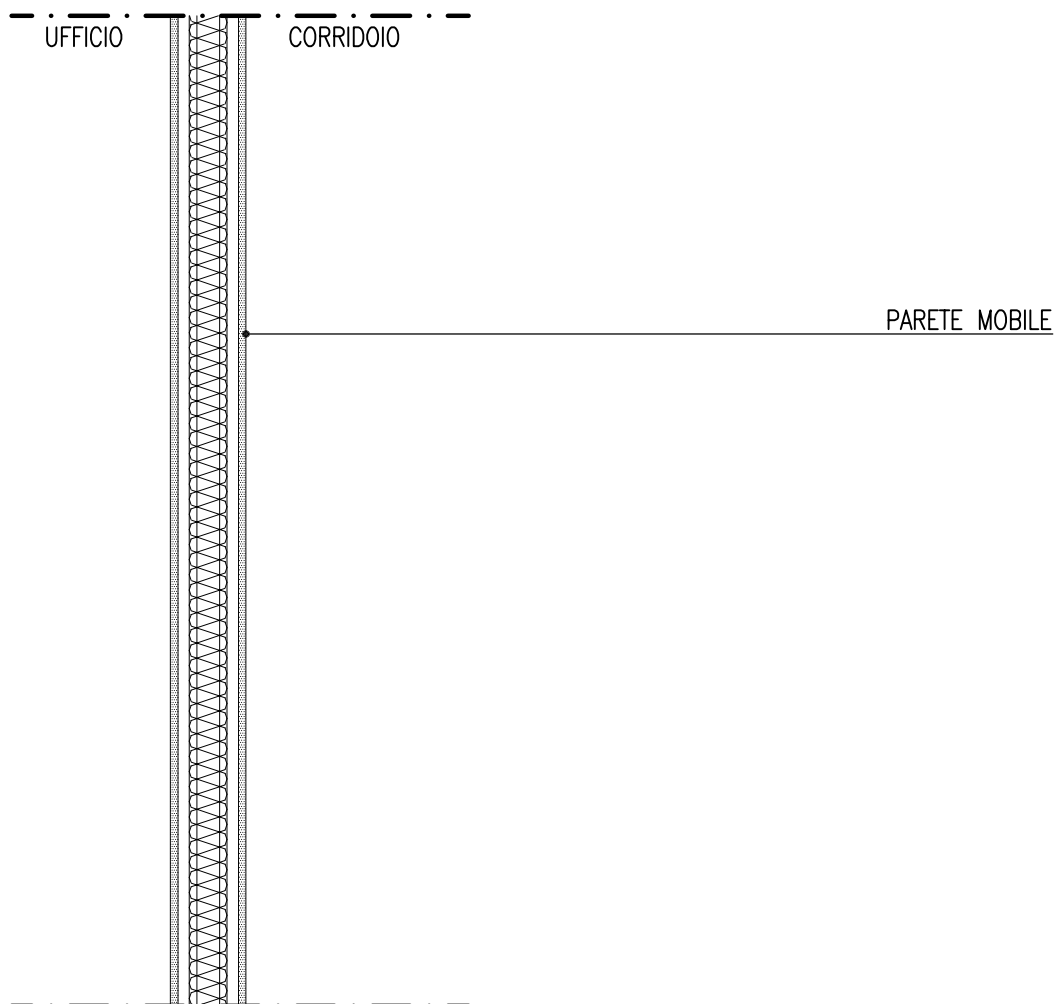
ESTERNO

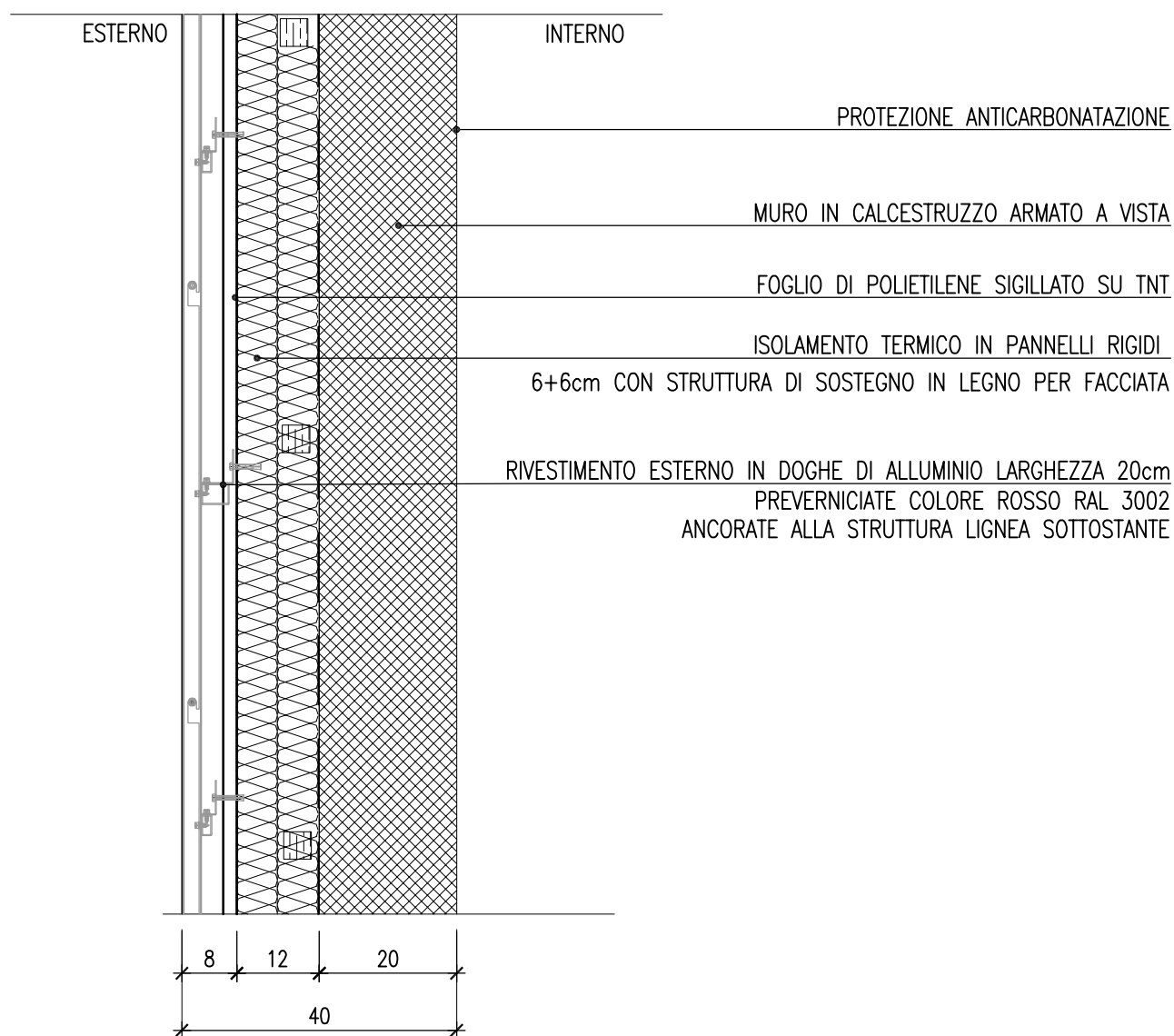
INTERNO

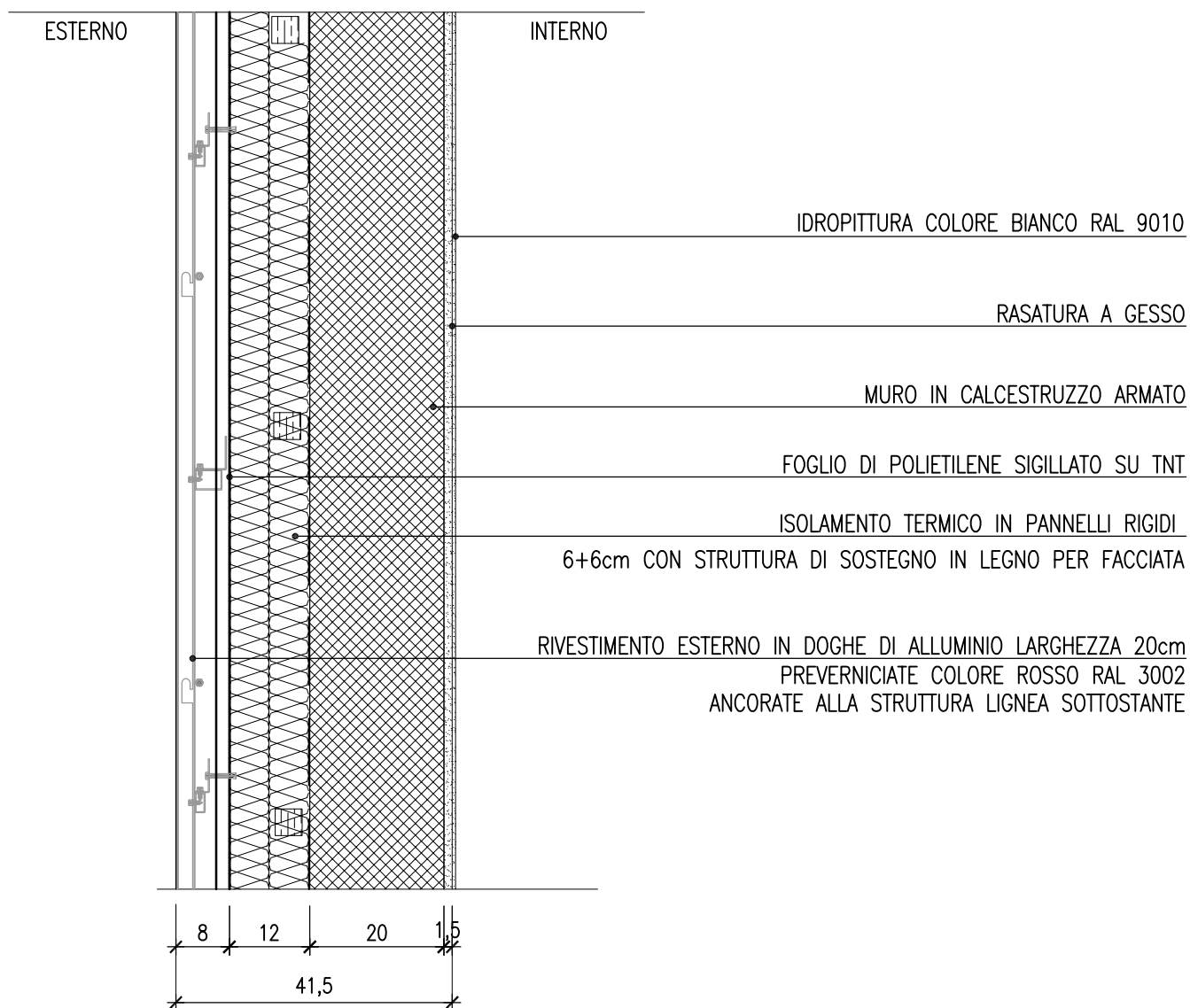






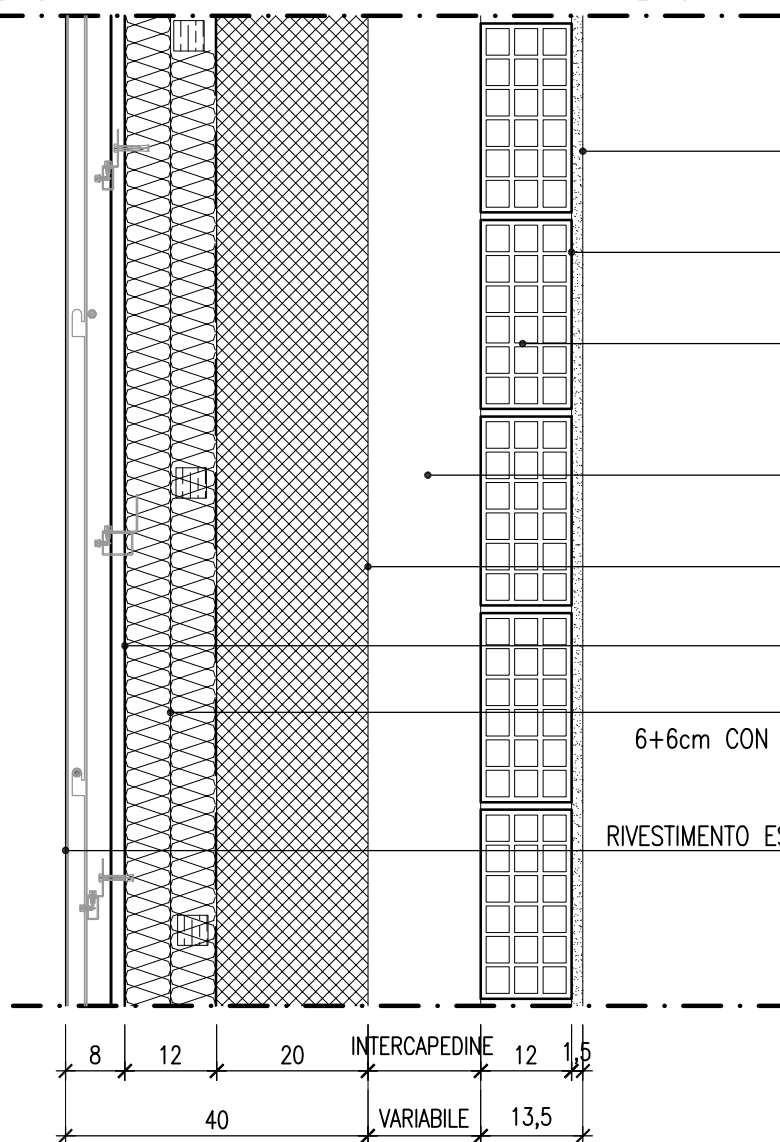


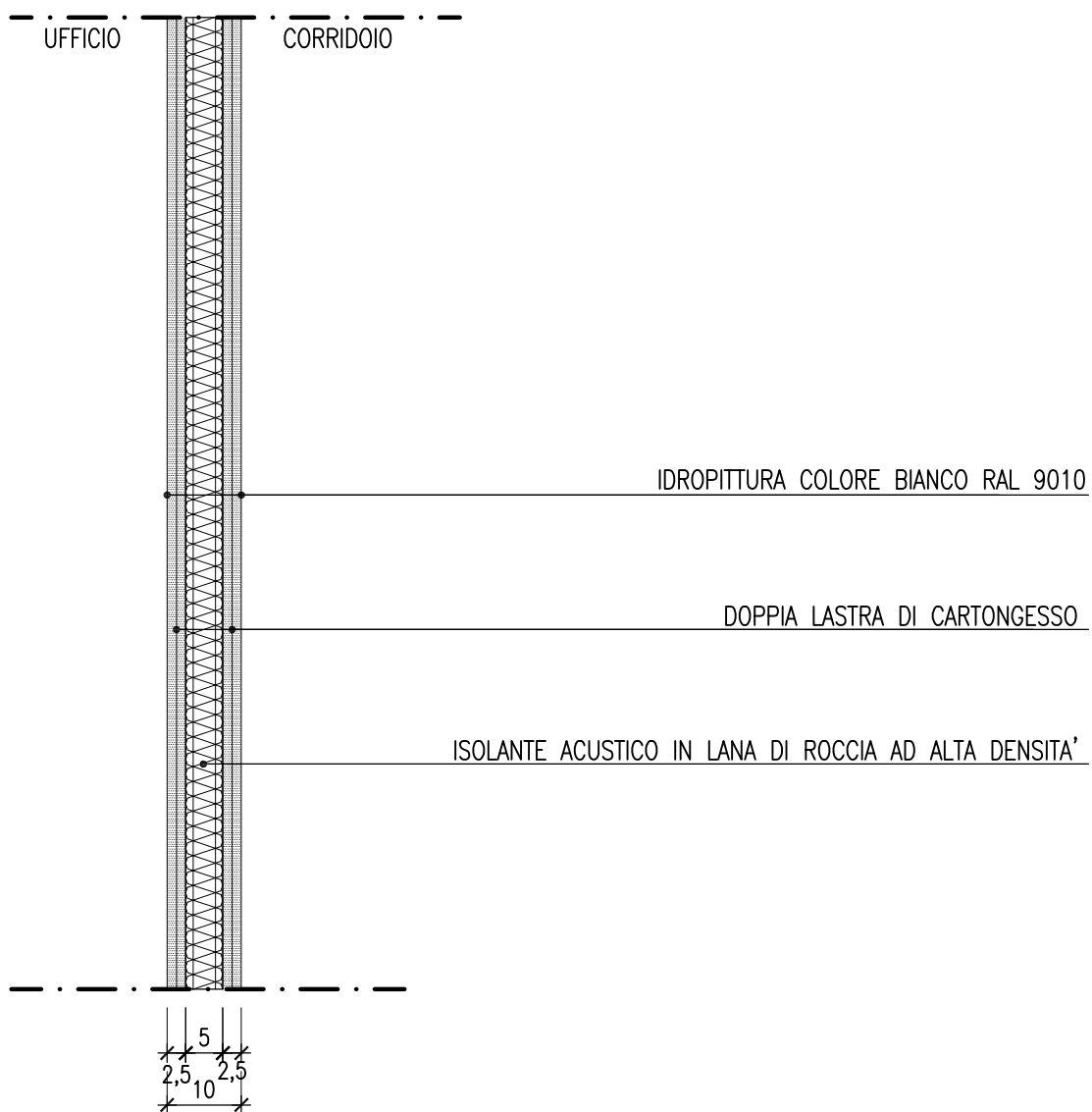


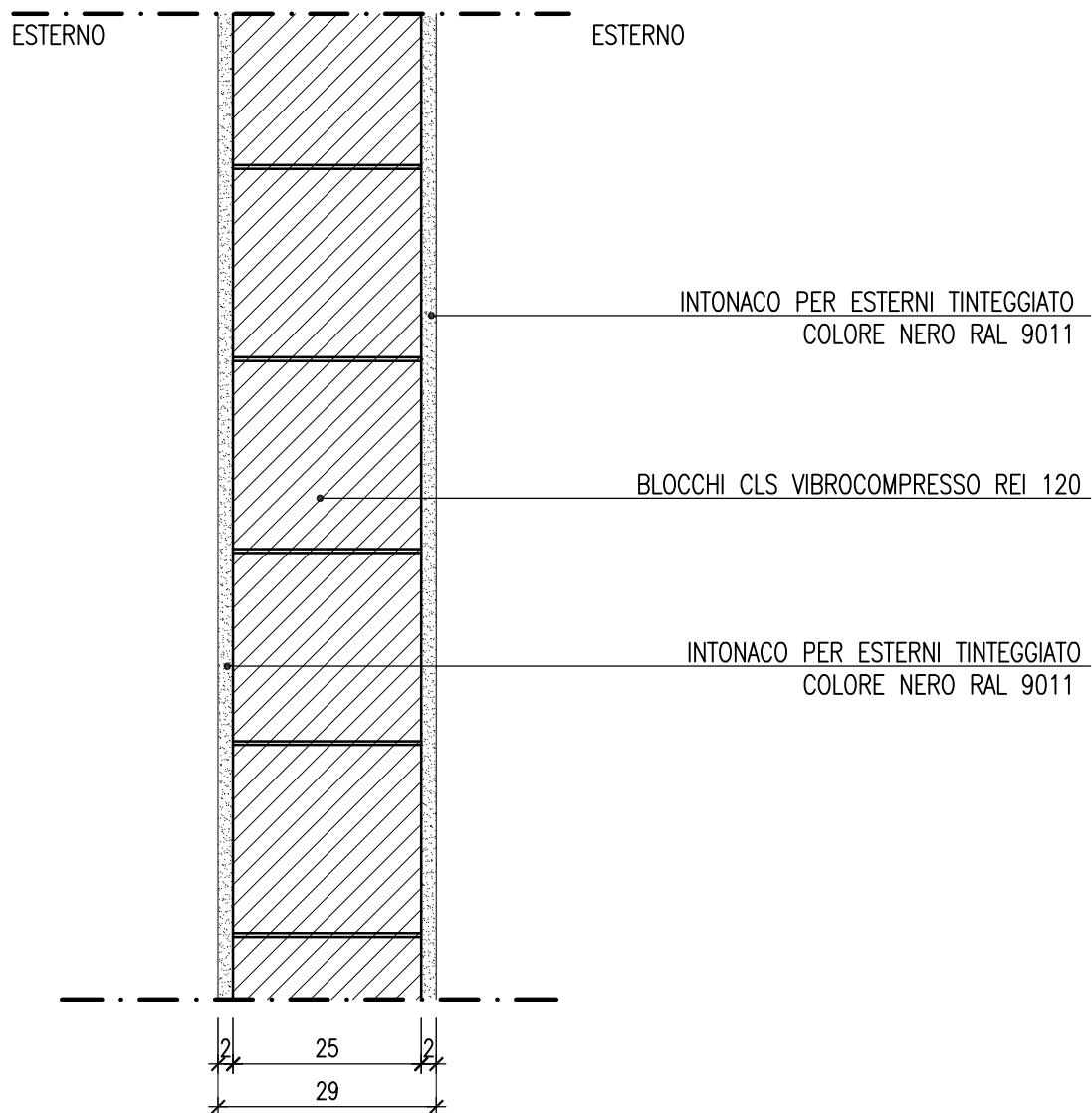


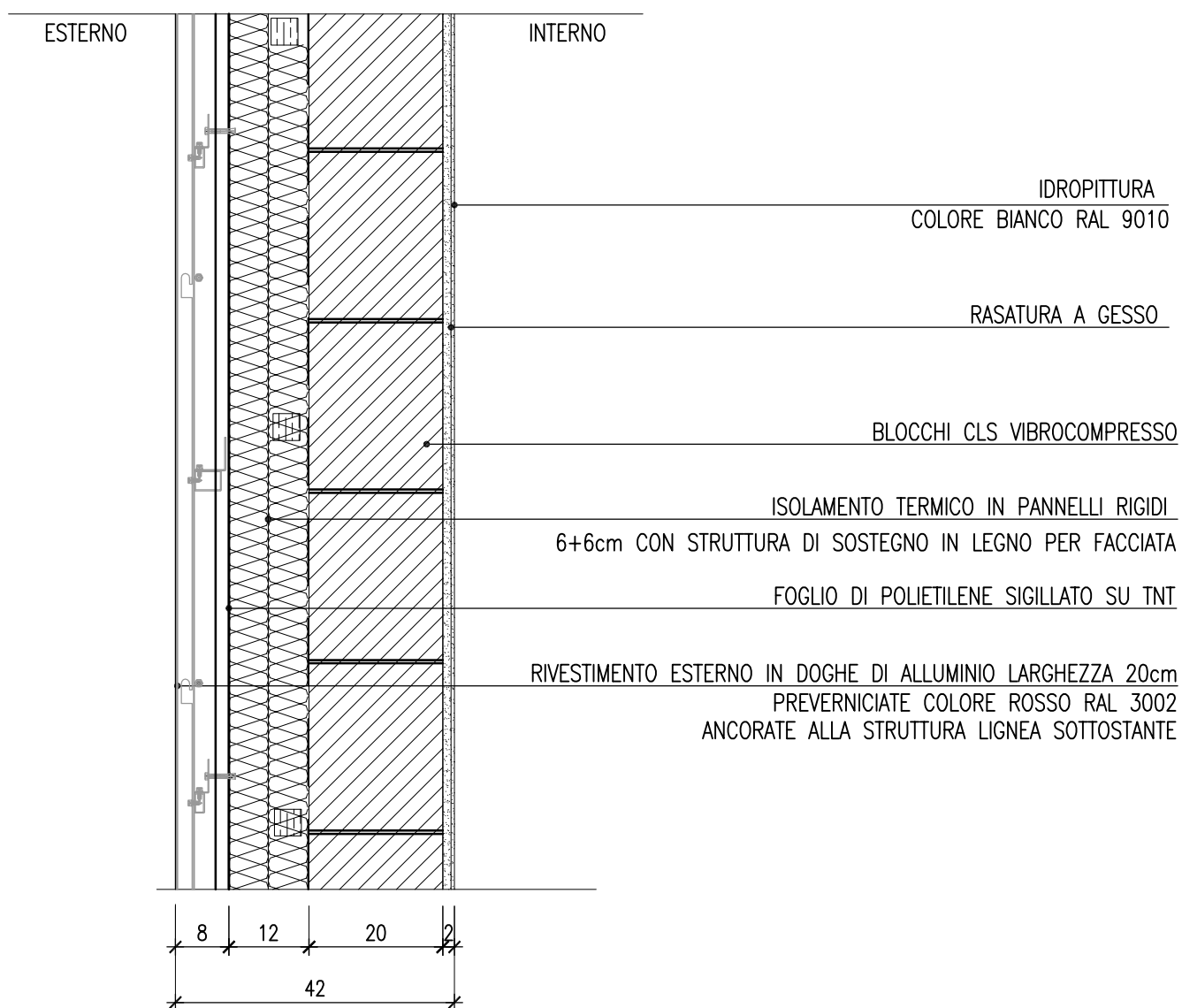
ESTERNO

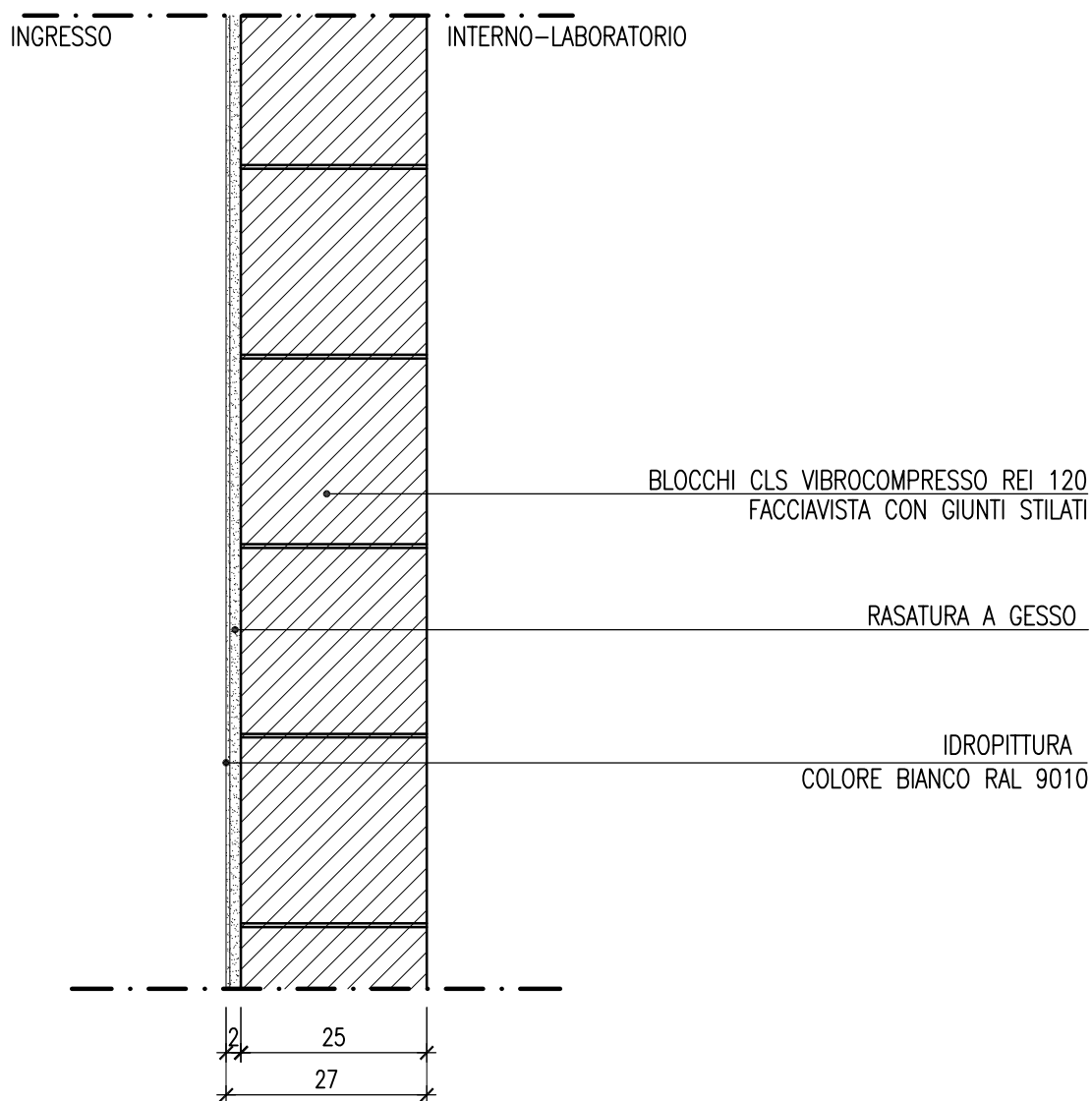
INTERNO

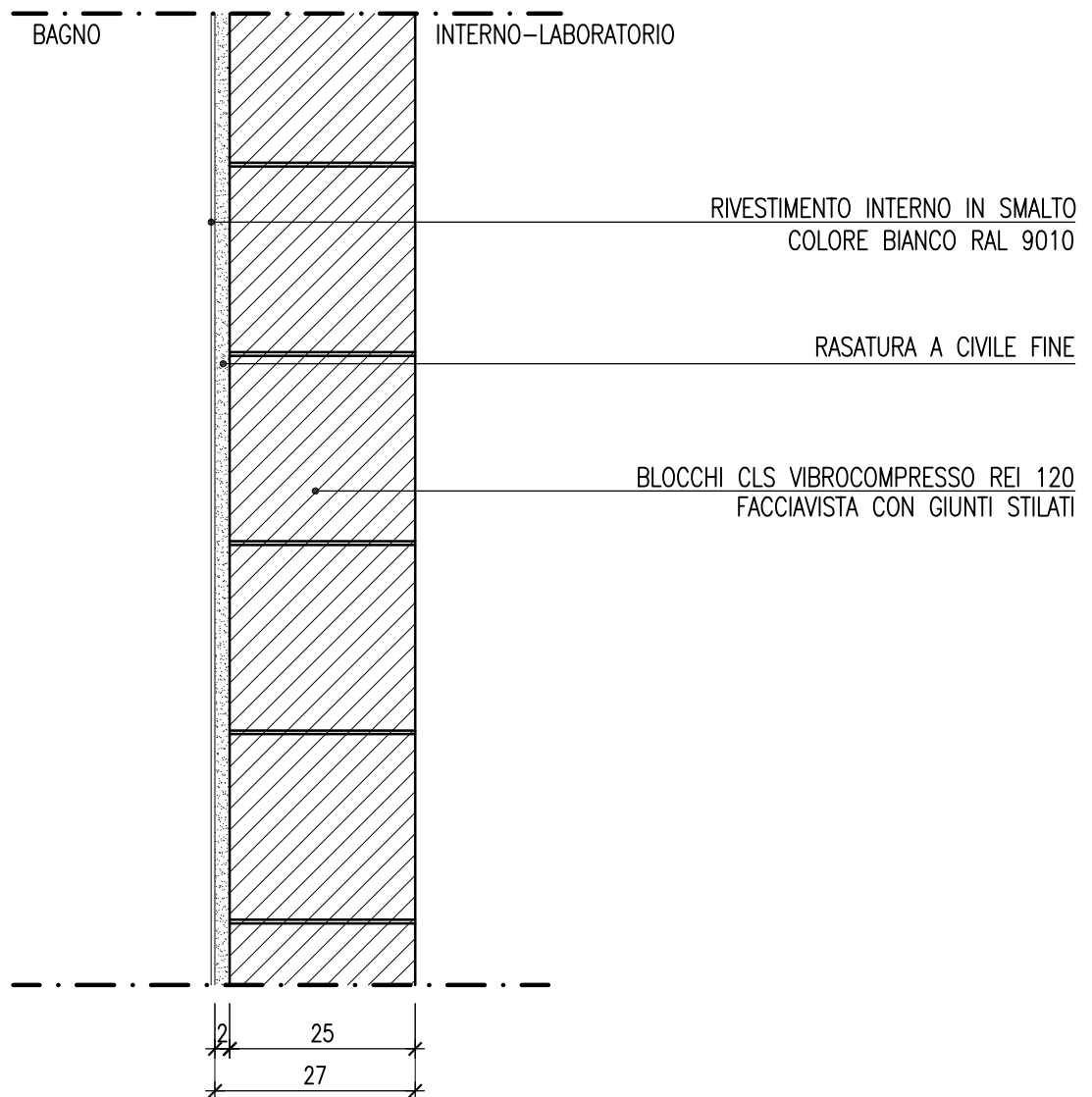


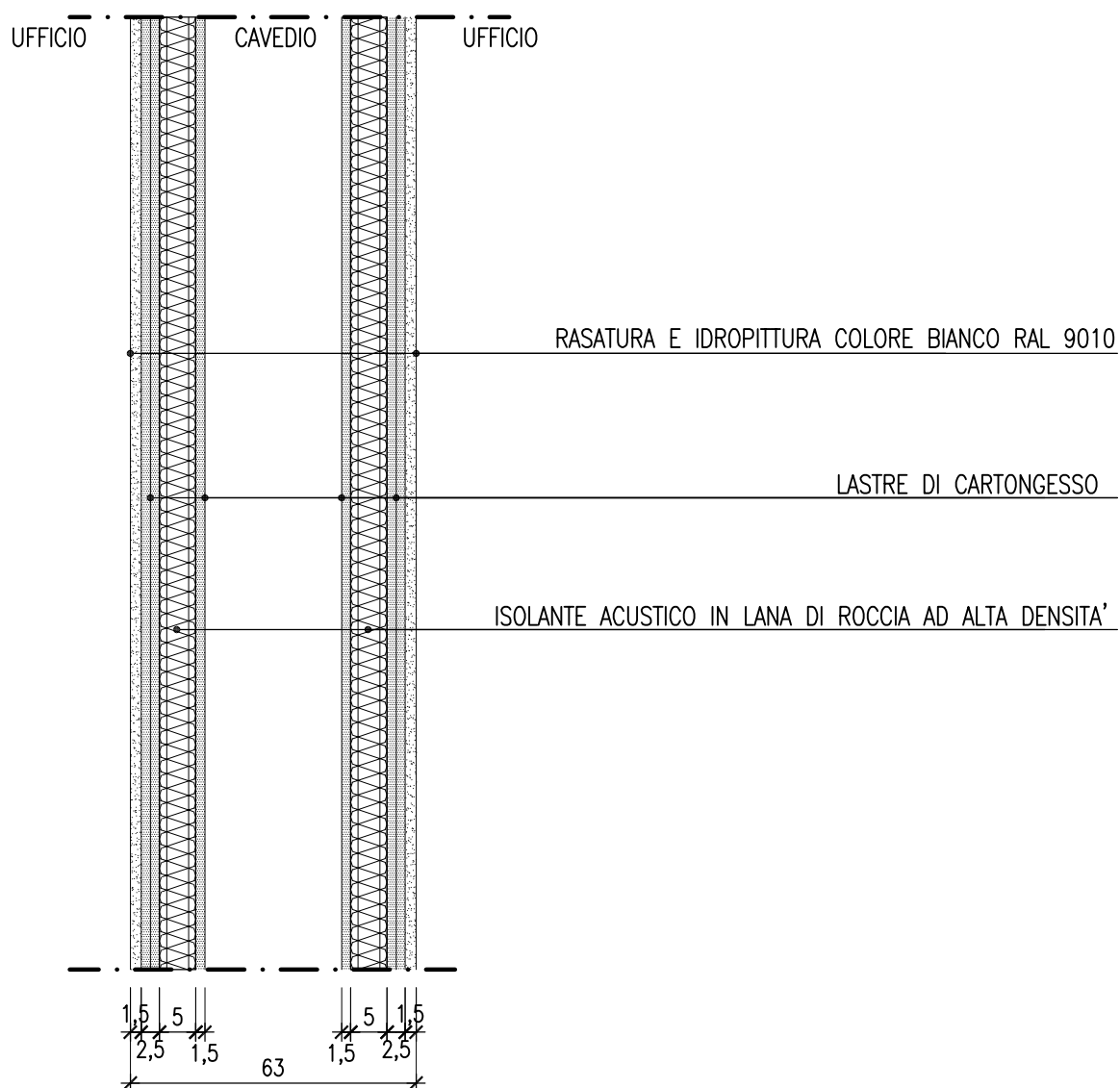


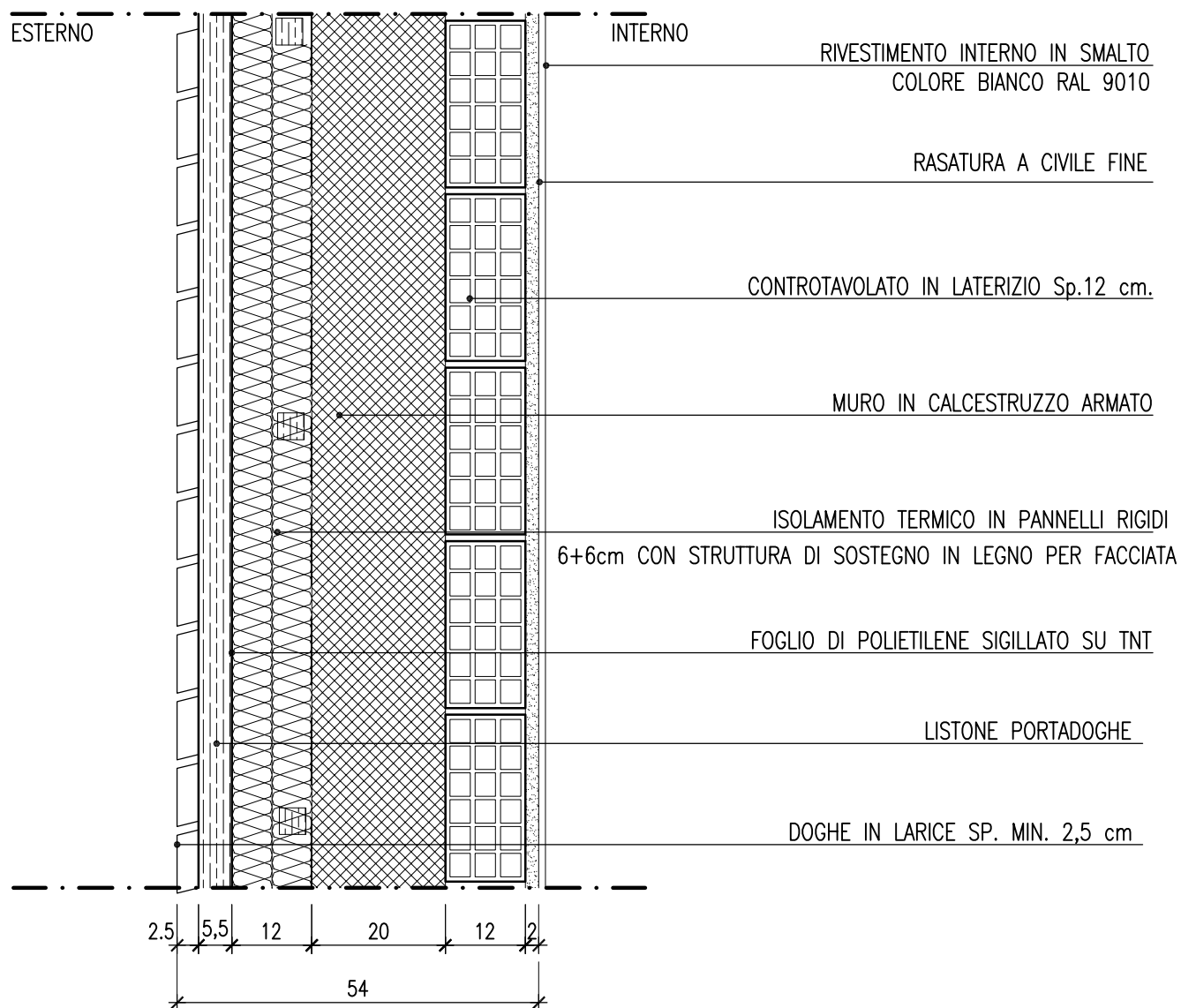


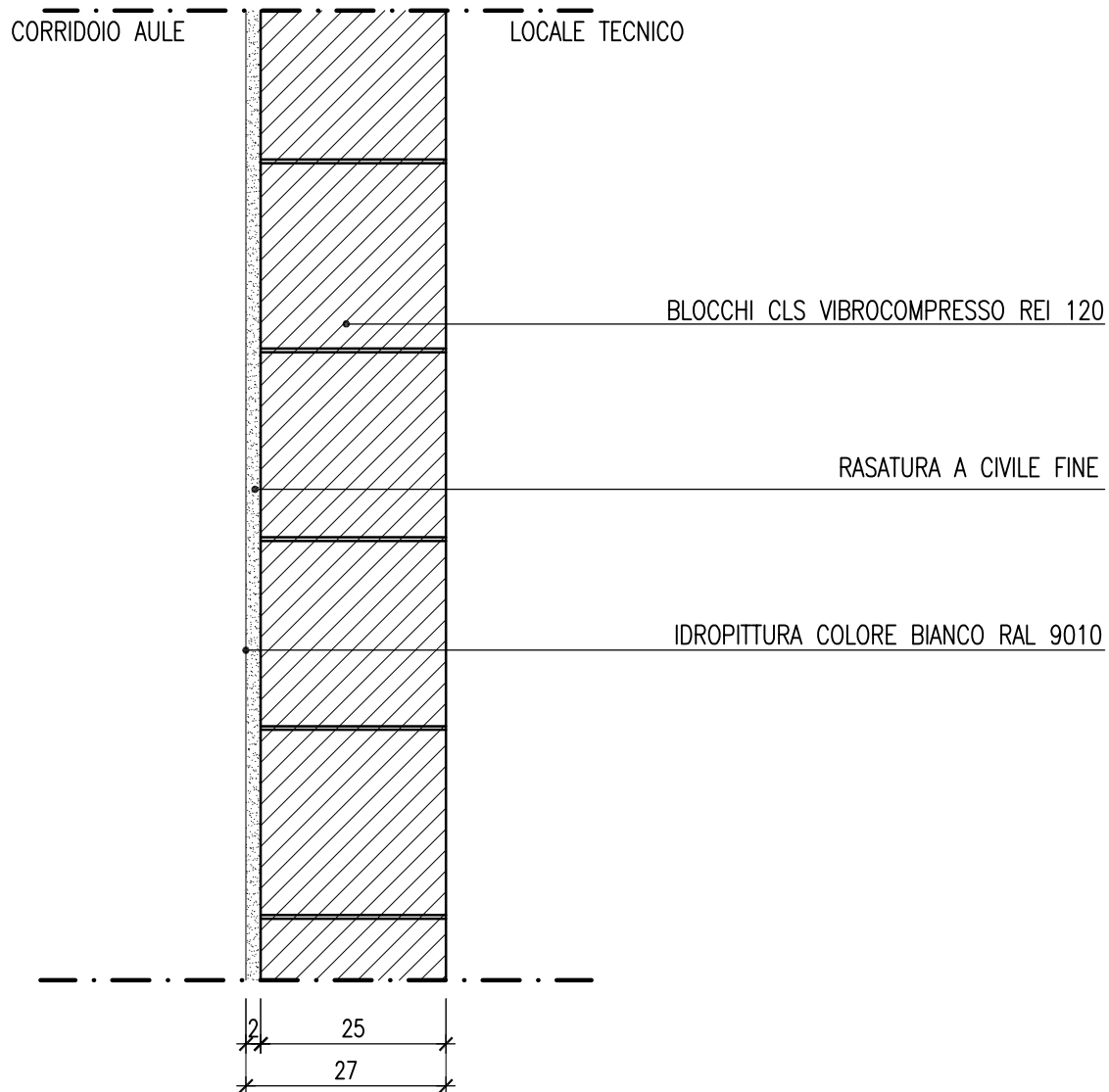












INTERNO-CORRIDOIO

ESTERNO

INTONACO PER ESTERNI TINTEGGIATO
COLORE NERO RAL 9011

BLOCCHI CLS VIBROCOMPRESSO REI 120

RASATURA A CIVILE FINE

IDROPITTURA COLORE BIANCO RAL 9010

